



- Modern enclosure system for small controls and touch panels
- 4 standard sizes; individual dimensions due to profile system design
- Version with handle frame, as built-in system or flush front frame, can be adapted to ROSE suspension systems GTS and GT 48/2

### Included in delivery

Enclosure body including Corners, seals, mounting material, rear panel or door, front panel mounting set and front panel

### Technical Data

#### Material:

Profile: DIN EN 573 EN AW-AlMgSi

Corner castings: DIN ENAC-AlSi12Cu 1(Fe)

#### Seal:

Corners: PE seal

Front panel / rear panel: CR seal

#### Paintwork / surface:

powder-coated

#### Colour:

Profile: RAL 7035, light grey

Corner elements: optional RAL 7035, light grey

Special colour on request

#### Protection class:

IP 65 in accordance with EN 60529

#### Thermal resistance:

-30°C to +80°C

## Product Overview

Order No.	Type	Dimensions	Description
<b>20.70 00 01</b>	ComOne 1	260 x 160 x 142.5	Flush front frame
<b>20.70 00 02</b>	ComOne 2	230 x 330 x 142.5	Flush front frame
<b>20.70 00 03</b>	ComOne 3	230 x 200 x 142.5	Flush front frame
<b>20.70 00 04</b>	ComOne 4	310 x 400 x 142.5	Flush front frame
<b>20.70 00 99</b>	ComOne 99	individual size	Flush front frame
<b>20.70 01 01</b>	ComOne 101	260 x 160 x 142.5	Side handle
<b>20.70 01 02</b>	ComOne 102	230 x 330 x 142.5	Side handle
<b>20.70 01 03</b>	ComOne 103	230 x 200 x 142.5	Side handle
<b>20.70 01 04</b>	ComOne 104	310 x 400 x 142.5	Side handle
<b>20.70 01 99</b>	ComOne 199	individual size	Side handle
<b>20.70 02 01</b>	ComOne 201	260 x 160 x 142.5	Built-in version
<b>20.70 02 02</b>	ComOne 202	230 x 330 x 142.5	Built-in version
<b>20.70 02 03</b>	ComOne 203	230 x 200 x 142.5	Built-in version
<b>20.70 02 04</b>	ComOne 204	310 x 400 x 142.5	Built-in version
<b>20.70 02 99</b>	ComOne 299	individual size	Built-in version



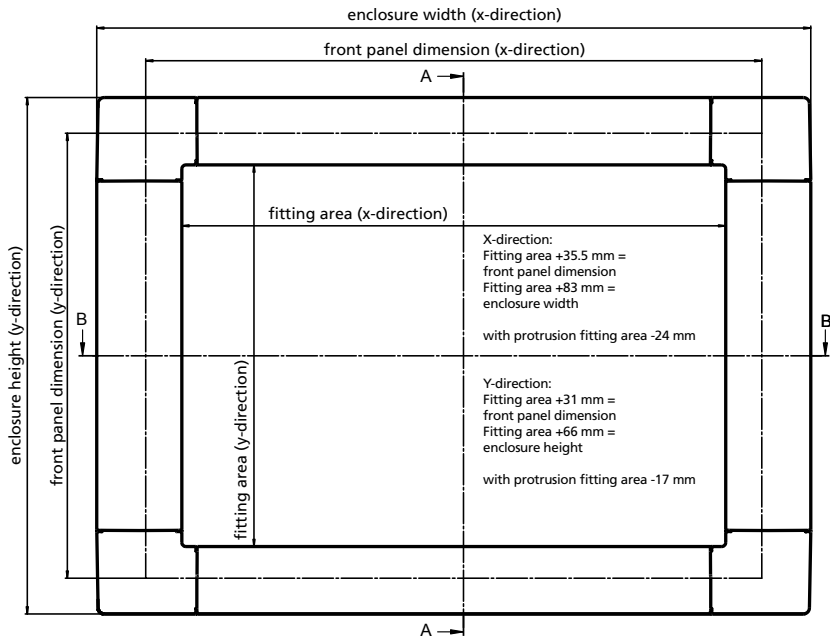
Version with side handles



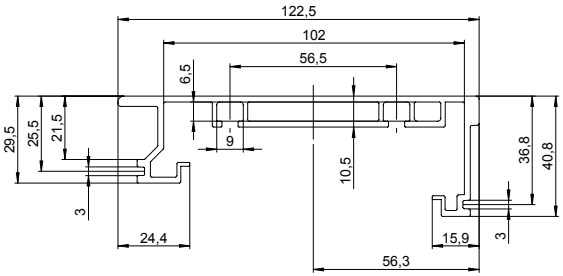
Version with flush front frame



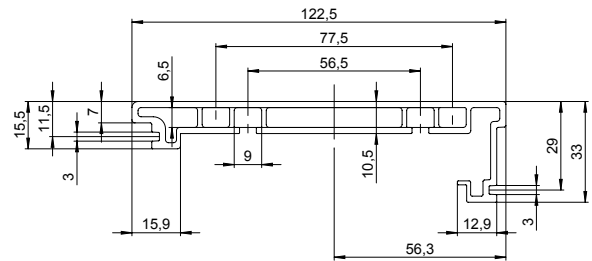
Version as built-in variant



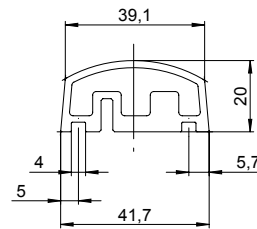
Vertical body profile



Horizontal body profile



Vertical frame profile



Horizontal frame profile

